

MONTHLY MEMBERSHIP PROGRESS REPORT

LOCATION NIGERIA

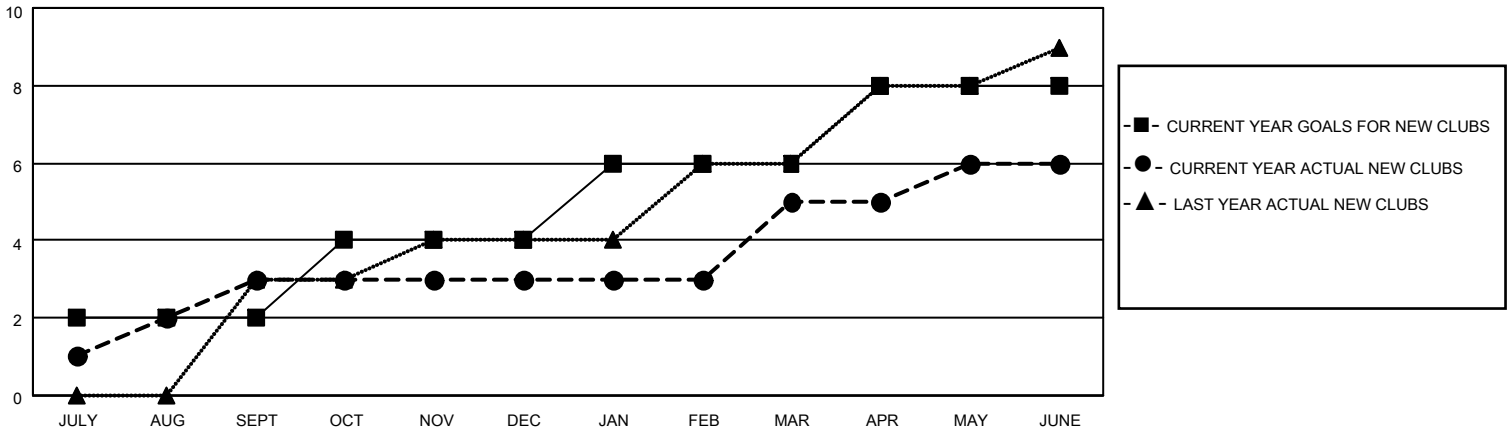
District 404 A1

Results as of: 6/30/2023

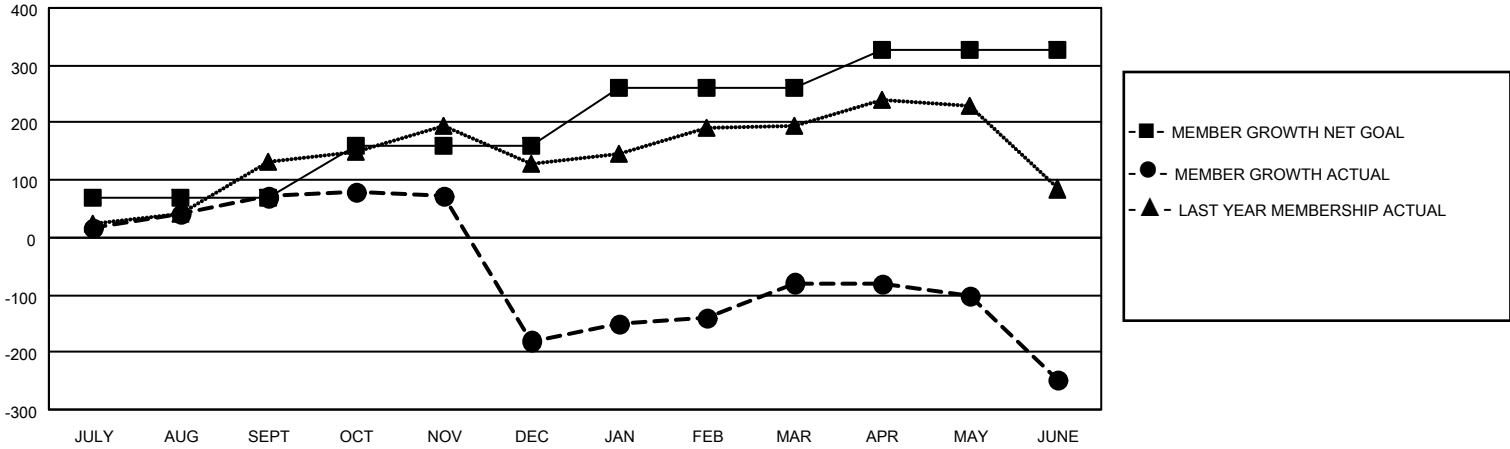
Clubs			
RESULTS FOR 2022-2023			
QUARTER	NEW CLUB GOAL	NEW CLUBS	DROPPED CLUBS
JULY/AUG/SEPT	2	3	0
OCT/NOV/DEC	2	0	9
JAN/FEB/MAR	2	2	0
APR/MAY/JUNE	2	1	4

Members			
RESULTS FOR 2022-2023			
QUARTER	MEMBER GROWTH NET GOAL	MEMBER GROWTH ACTUAL	DROPPED MEMBERS ACTUAL (including transfers)
JULY/AUG/SEPT	70	116	40
OCT/NOV/DEC	90	94	343
JAN/FEB/MAR	100	162	38
APR/MAY/JUNE	66	92	242

GOALS AND ACTUAL NEW CLUBS CUMULATIVE



GOALS AND ACTUAL MEMBERS CUMULATIVE



DROPPED CLUBS: 13	
DROPPED MEMBERS	
DECEASED	9
CLUB CANCELLED	194
OTHER	460
TOTAL	663

77 CLUBS OF 127 ADDED 1 OR MORE NEW MEMBERS

[CLICK HERE FOR CUMULATIVE MEMBERSHIP DATA](#)

<u>GENDER DISTRIBUTION</u>	
MALE	1,445 (56.53%)
FEMALE	1,111 (43.47%)
NON BINARY	0 (0.00%)
PREFER NOT TO ANSWER	0 (0.00%)
TOTAL FAMILY UNIT MEMBERS	
	104
FAMILY MEMBERS PAYING HALF DUES	
	54